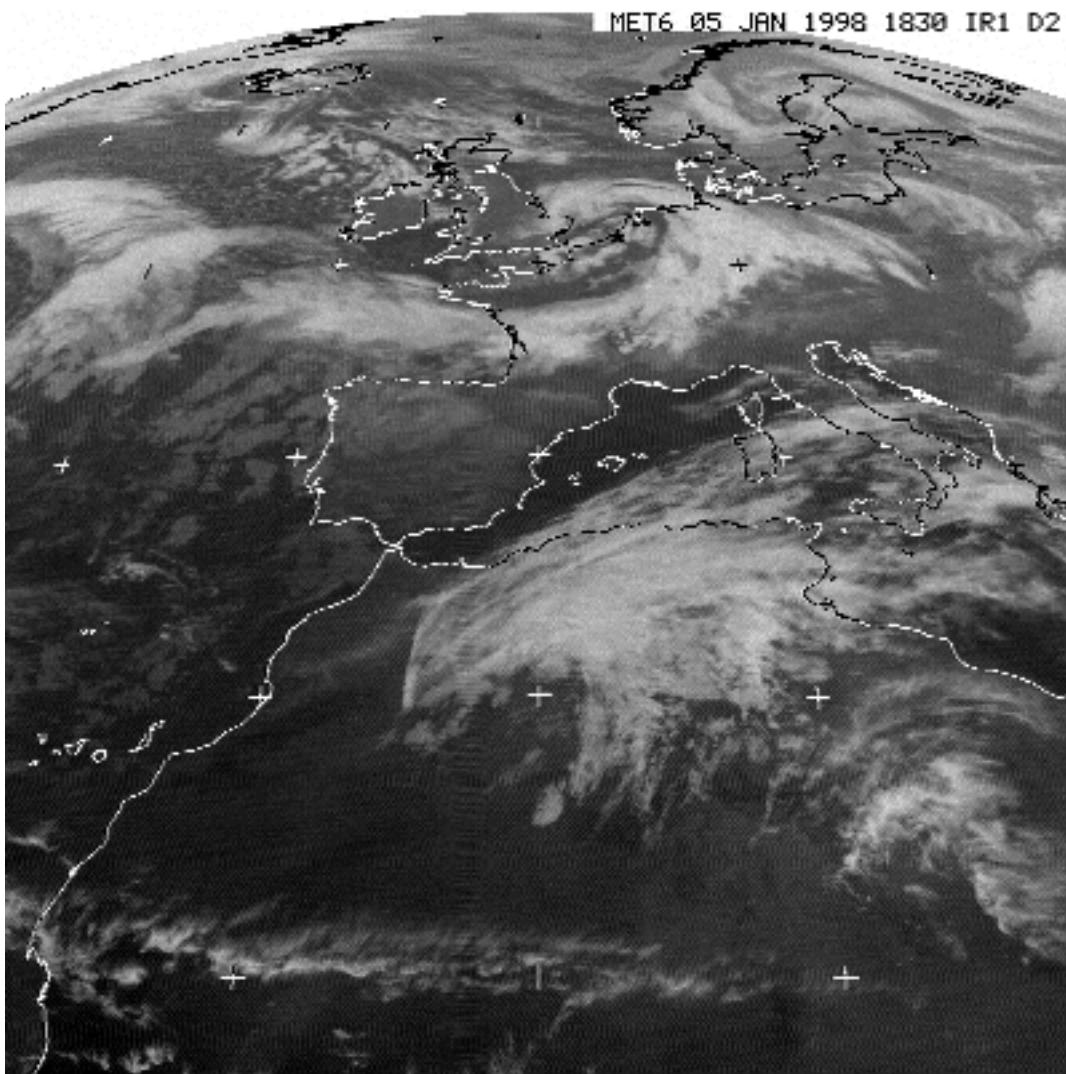


# Europe - Meteosat Analysis

Your name \_\_\_\_\_



Study the infra-red satellite image 18.30hrs on 5 Jan 1999

Dark = warmer  
Light = cooler

1. Use labels to show the following:

HP - high pressure  
LP - low pressure  
WF - warm front  
FC - frontal cloud  
CF - cold front



2. Describe the general weather likely to be experienced in

a) UK

b) Spain

c) Algeria and Libya

3. What problems might have occurred in GB as a result of the weather conditions shown on the satellite image?